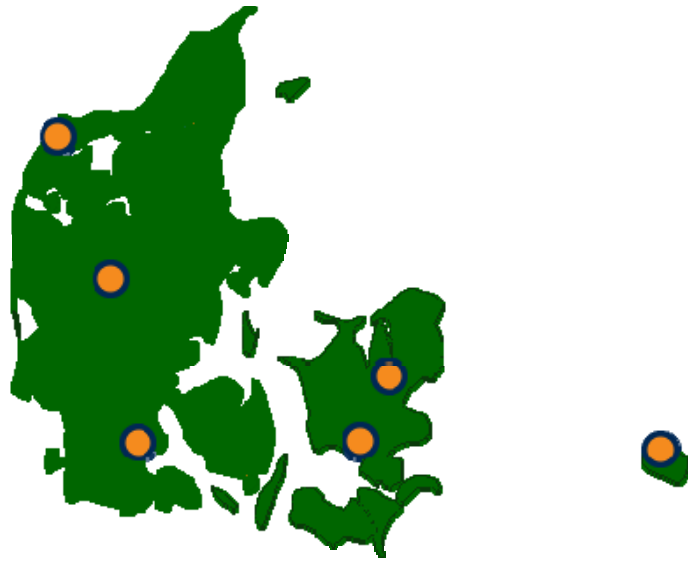




Michael Grønbech-Dam sektionschef / Major

Allinge 31. maj 2012



Working with emergencies - Bornholm **MAJOR INCIDENT COMMAND** (Beredskabsstaben)



Regional Organisation (Beredskabsstaben) Incident Command – Bornholm (ICB)

Strategic Level

Emergency Command Group

- Police Director, Bornholm
- Civil Protection, DEMA Bornholm
- CEO, Regional Municipality of Bornholm
- Armed Forces



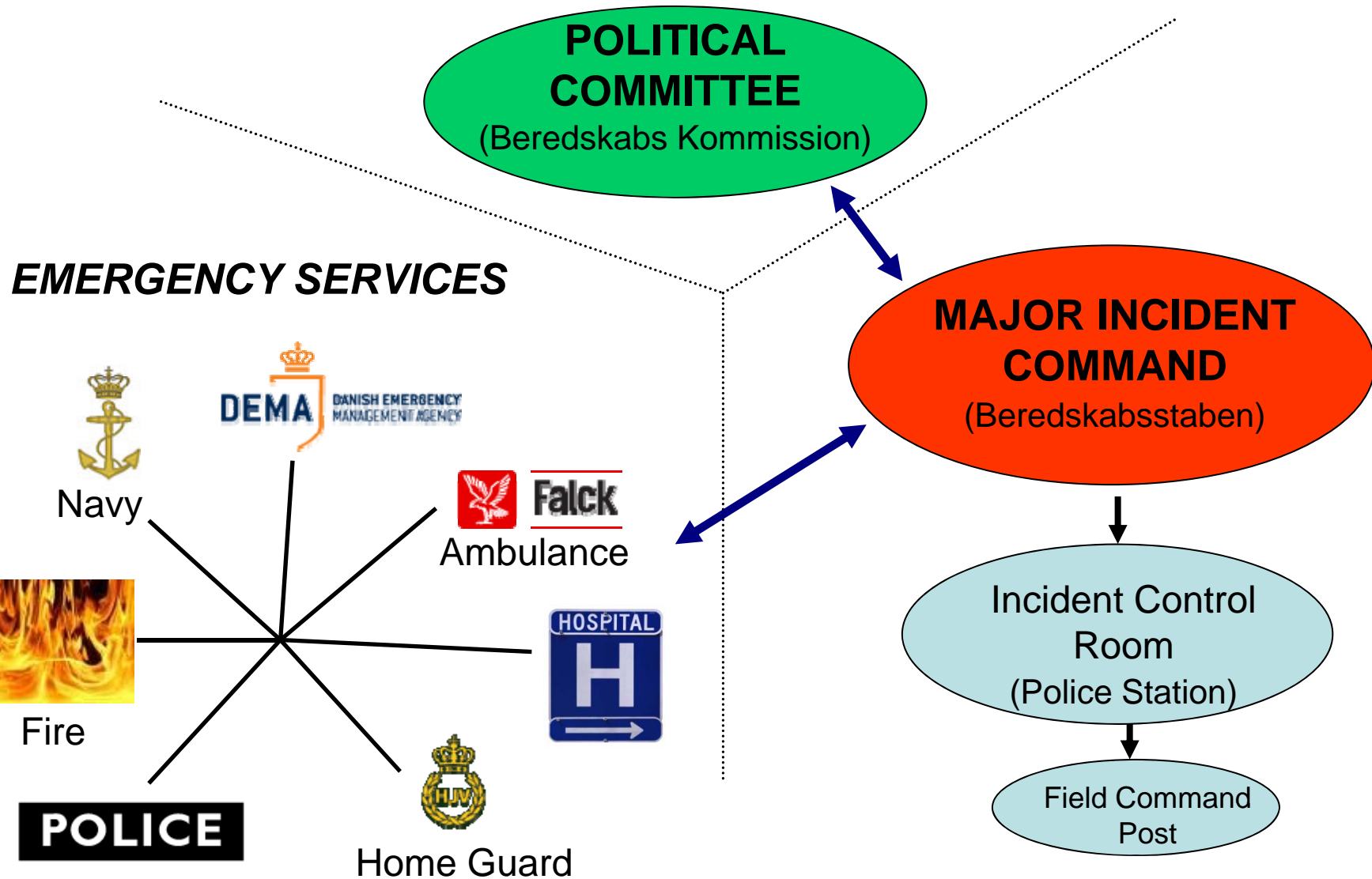
Operational Level

In major emergencies a command post is set up at the Police station under the command of the Police Chief to co-ordinate activities of:

- DEMA, Civil Protection
- Fire Brigade
- Police
- Armed Forces
- Hospital
- (Ambulance services)
- SAR

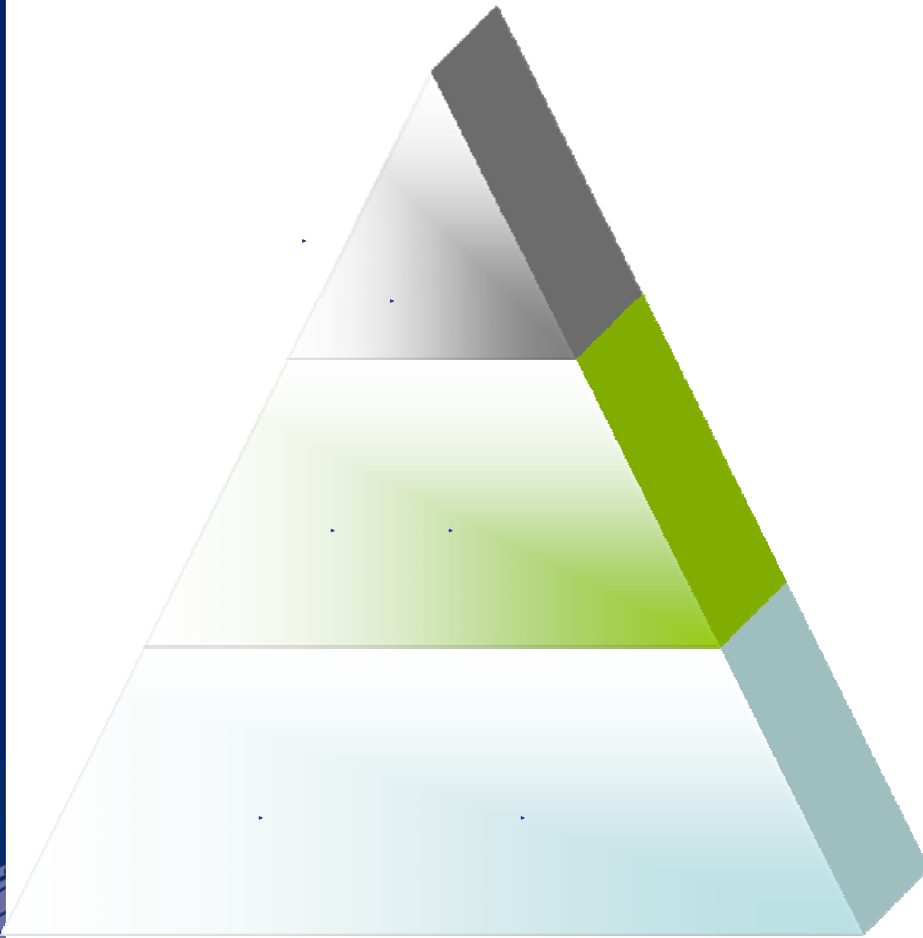
MAJOR INCIDENTS:

How are they managed on Bornholm?



Incident Command – Bornholm (ICB)

Alert levels



Step 1 - Information Alert:

Notification of an incident that may require ICB to act.

Step 2 – Staff Alert:

Used when ICB can be required to respond within a timeframe of approx. 2 hours.

Step 3 - Operational Alert:

Used for scheduled and unscheduled incidents that require immediate response of ICB

Programme August 30 (1)

- 08.30 Transport from hotel to KST
- 09.00-09.45 Presentation of KST and the work at KST
- 09.45-10.15 Coastal security, protection of the coastline and clean-up of spilt oil.
- 10.15-10.35 Transport to the environment ship GUNNAR THORSSON (Rib boat)
- 10.40-11.35 Briefing on the function of the environmental ships functions.
- 11.40-11.55 Transport t to and from ship (Rib boat)

Programme August 30 (2)

- 12.00-12.45 Lunch.
- 13.00-14.00 Press meeting
- 14.00-15.00 Evaluation.
- 15.00-18.00 Tour to Vang Harbour
- 18.30 Ferry to Ystad